

MASTER CTS

Construction Technology Systems

A Division of **ASATEEN GROUP**

EXECUTIVE INSTITUTIONAL BRIEF — 2026



CONSTRUCTION
SYSTEMS



INDUSTRIAL
SYSTEMS



INFRASTRUCTURE
SYSTEMS



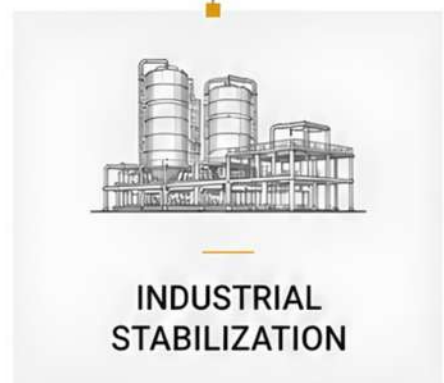
HYDRAULIC
SYSTEMS



ENGINEERED
SOLUTIONS

INSTITUTIONAL OVERVIEW

MASTER CTS operates as a construction technology systems division within ASATEEN GROUP.



Systems engineering approach



Project-specific deployment



Integrated technical platform

INFRASTRUCTURE AND CONSTRUCTION CONTEXT

Large-scale infrastructure and construction environments require durable, scalable, and deployment-oriented engineering systems.



DURABILITY PRESSURE

Infrastructure assets face harsh environmental and operational conditions.



EXECUTION SPEED

Projects demand faster delivery without compromising quality.



LIFECYCLE PERFORMANCE

Long-term reliability and lower operational cost are essential.



INFRASTRUCTURE EXPANSION

Growing populations and economic activity require scalable solutions.

MASTER CTS

SYSTEMS PLATFORM



BUILDING SYSTEMS

Integrated building solutions engineered for performance, efficiency, and durability.



INFRASTRUCTURE SYSTEMS

Infrastructure systems engineered for large-scale public works and critical networks.



MASTER GREEN BUILDING

Integrated modular systems (LSF, board, foam).



MASTER BAR

Reinforcement and structural performance systems.



MASTER BOARD

Panelized construction board solutions.



MASTER FOAM CONCRETE

Lightweight applied construction material systems.



MASTER BRICK

Architectural facade and wall system.



MASTER FLOK

Roads and soil stabilization systems.



MASTER GCCM

Canal lining and water infrastructure systems.



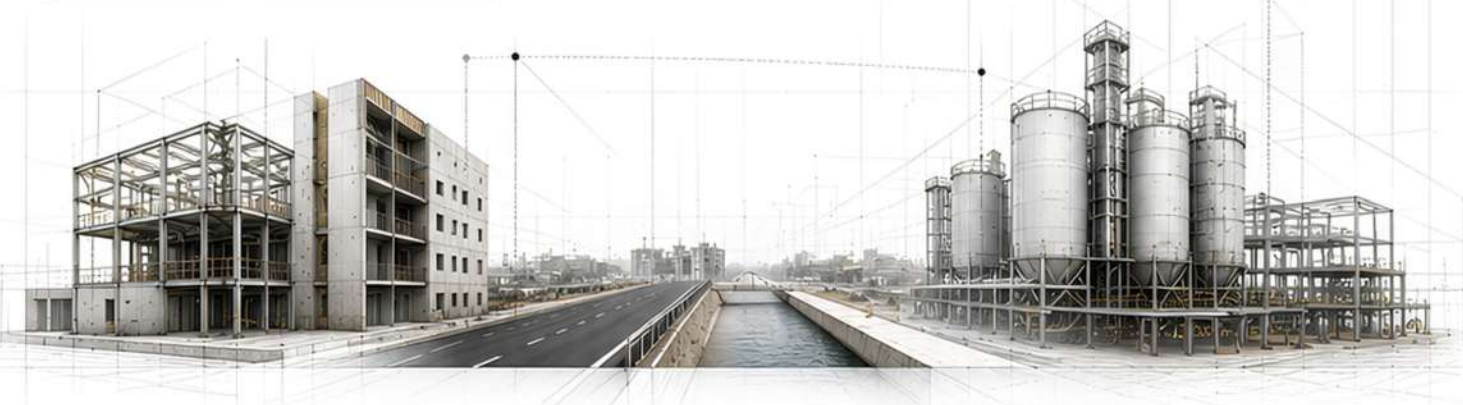
MASTER REPHOS

Specialized systems for infrastructure applications.



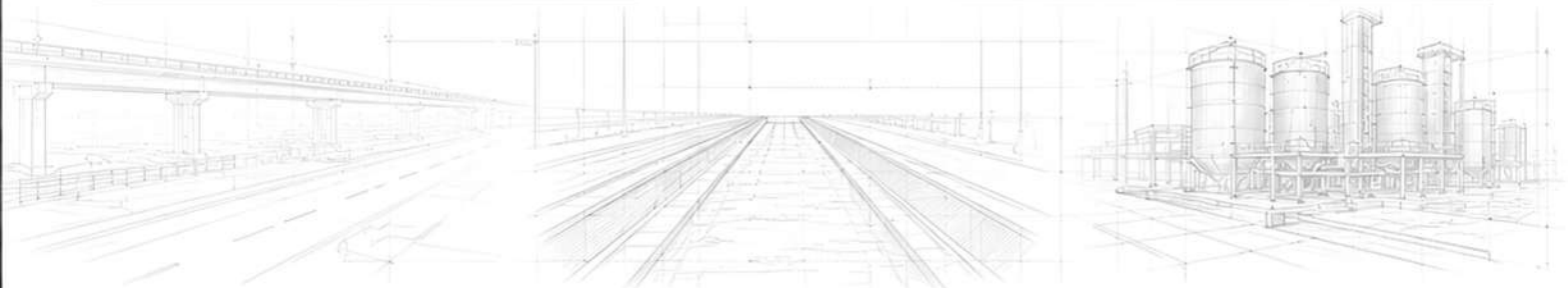
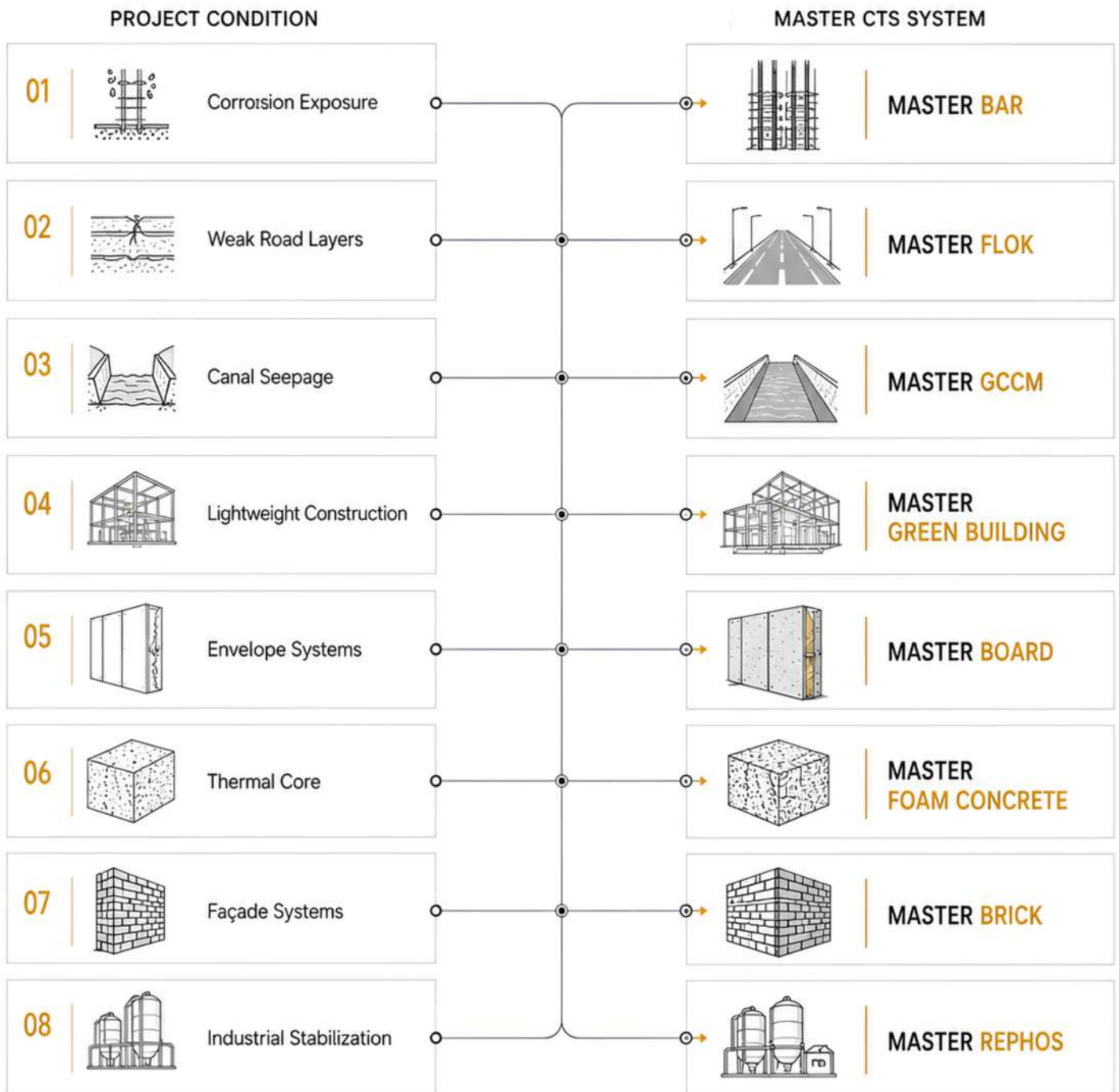
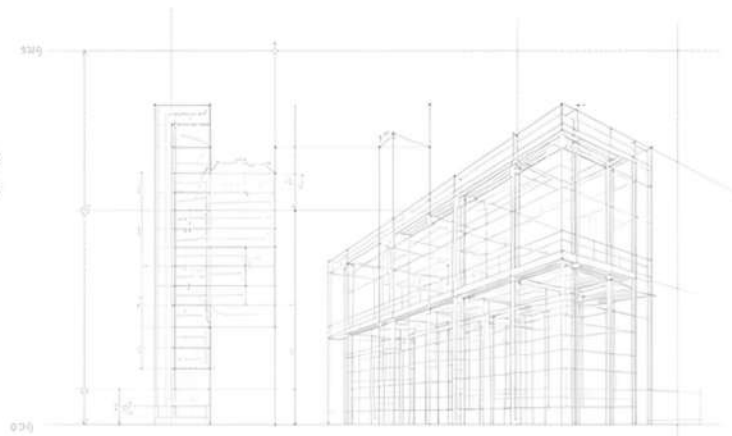
INDUSTRIAL STABILIZATION SYSTEMS

Industrial stabilization and treatment systems for soil, ground, and material performance enhancement.



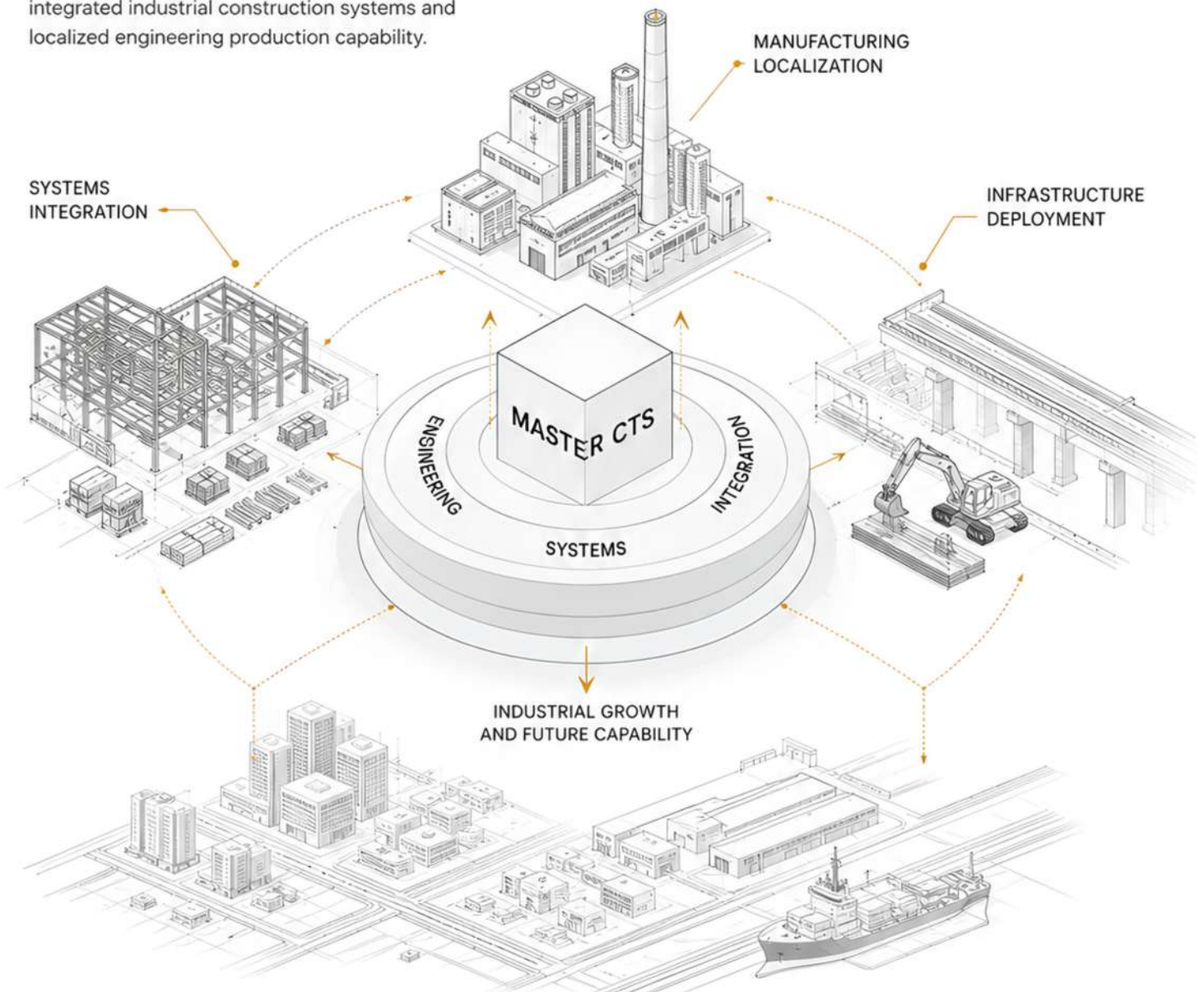
ENGINEERING DEPLOYMENT LOGIC

System selection based on project condition, environmental stress, and deployment requirement.



INDUSTRIAL VISION 2030

MASTER CTS supports the transition toward integrated industrial construction systems and localized engineering production capability.



LOCALIZATION

Strengthening local manufacturing and engineering capacity to reduce dependency and increase national value.



INDUSTRIAL INTEGRATION

Integrating engineered systems, production lines, and technical processes into a unified industrial ecosystem.



INFRASTRUCTURE SUPPORT

Delivering reliable systems that support durable infrastructure and accelerate national development.

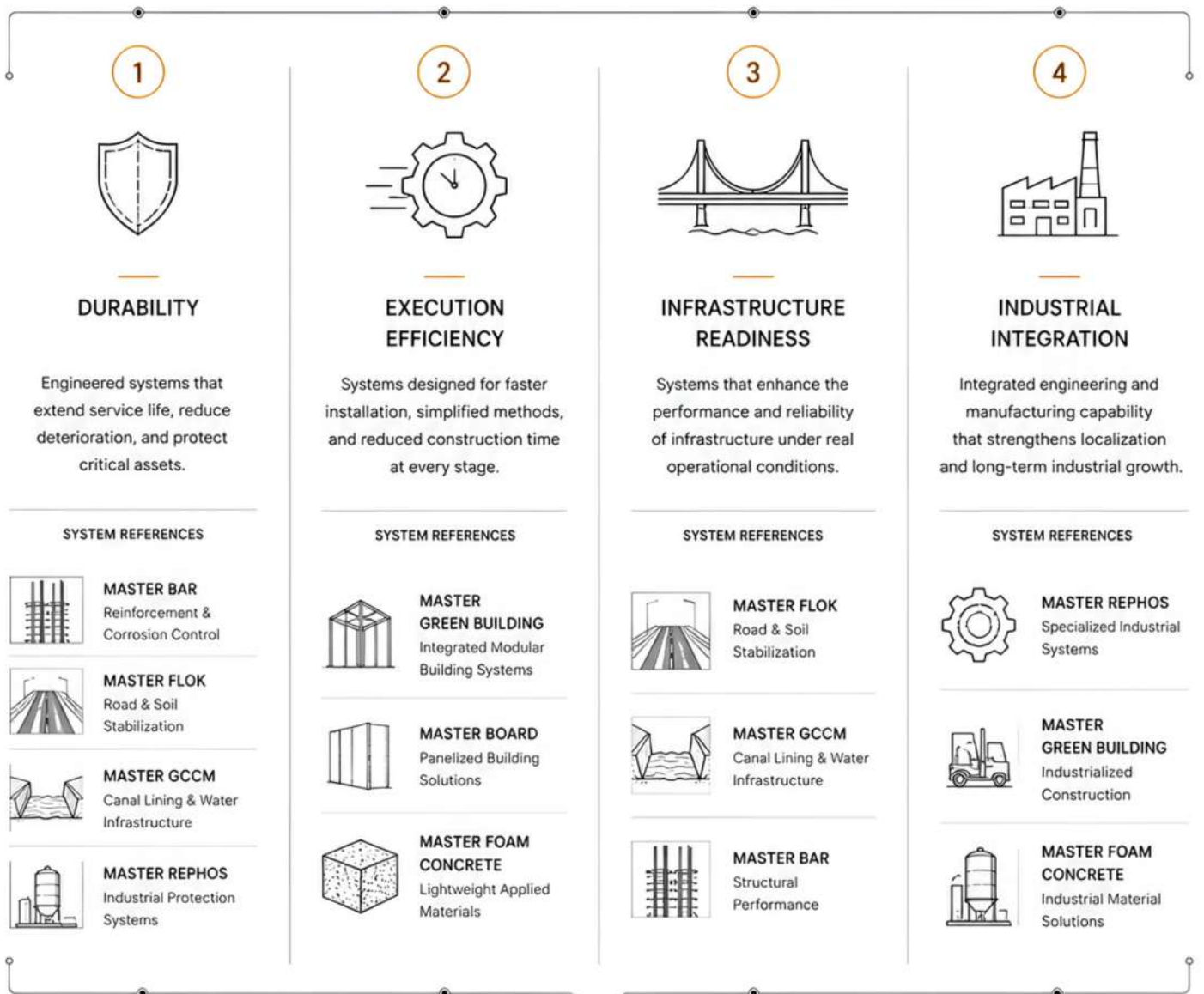


REGIONAL SCALABILITY

Building systems and capabilities that scale across markets and strengthen regional industrial presence.

STRATEGIC VALUE FRAMEWORK

MASTER CTS systems are structured around long-term engineering value and deployment efficiency.

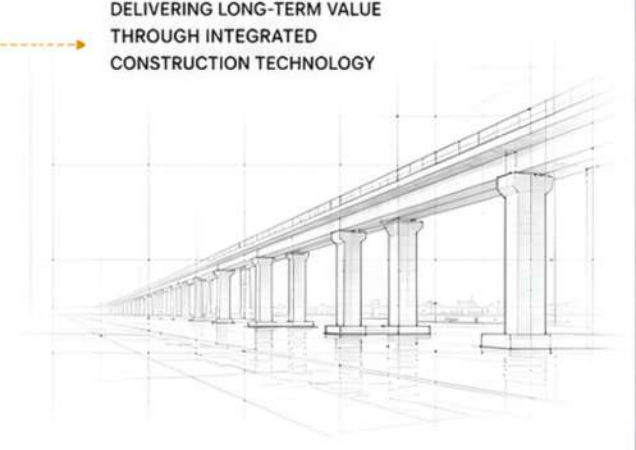
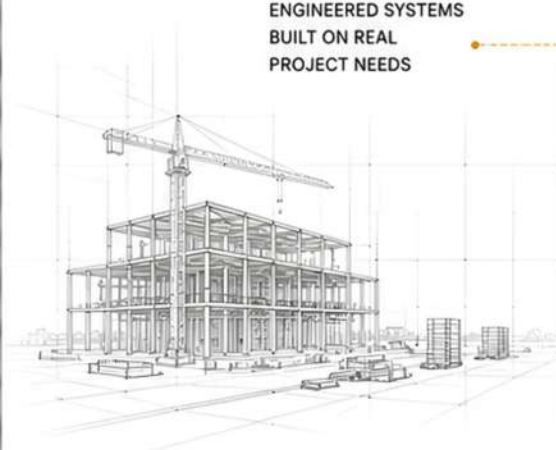


ENGINEERED SYSTEMS
BUILT ON REAL
PROJECT NEEDS

DELIVERING LONG-TERM VALUE
THROUGH INTEGRATED
CONSTRUCTION TECHNOLOGY



SUSTAINABLE OUTCOMES
LOWER LIFE-CYCLE COST
NATIONAL CAPABILITY BUILDING
REGIONAL COMPETITIVENESS





MASTER CTS

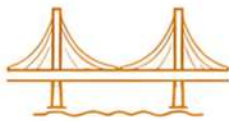
Construction Technology Systems

A Division of ASATEEN GROUP

Engineering systems structured for infrastructure, construction, and industrial deployment.



BUILDING SYSTEMS



INFRASTRUCTURE SYSTEMS



HYDRAULIC PROTECTION



INDUSTRIAL STABILIZATION